

COMMUNE DE MERIA (HAUTE-CORSE)

PLAN LOCAL D'URBANISME


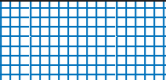



ZONAGE PROVISOIRE - PHASE ARRETE

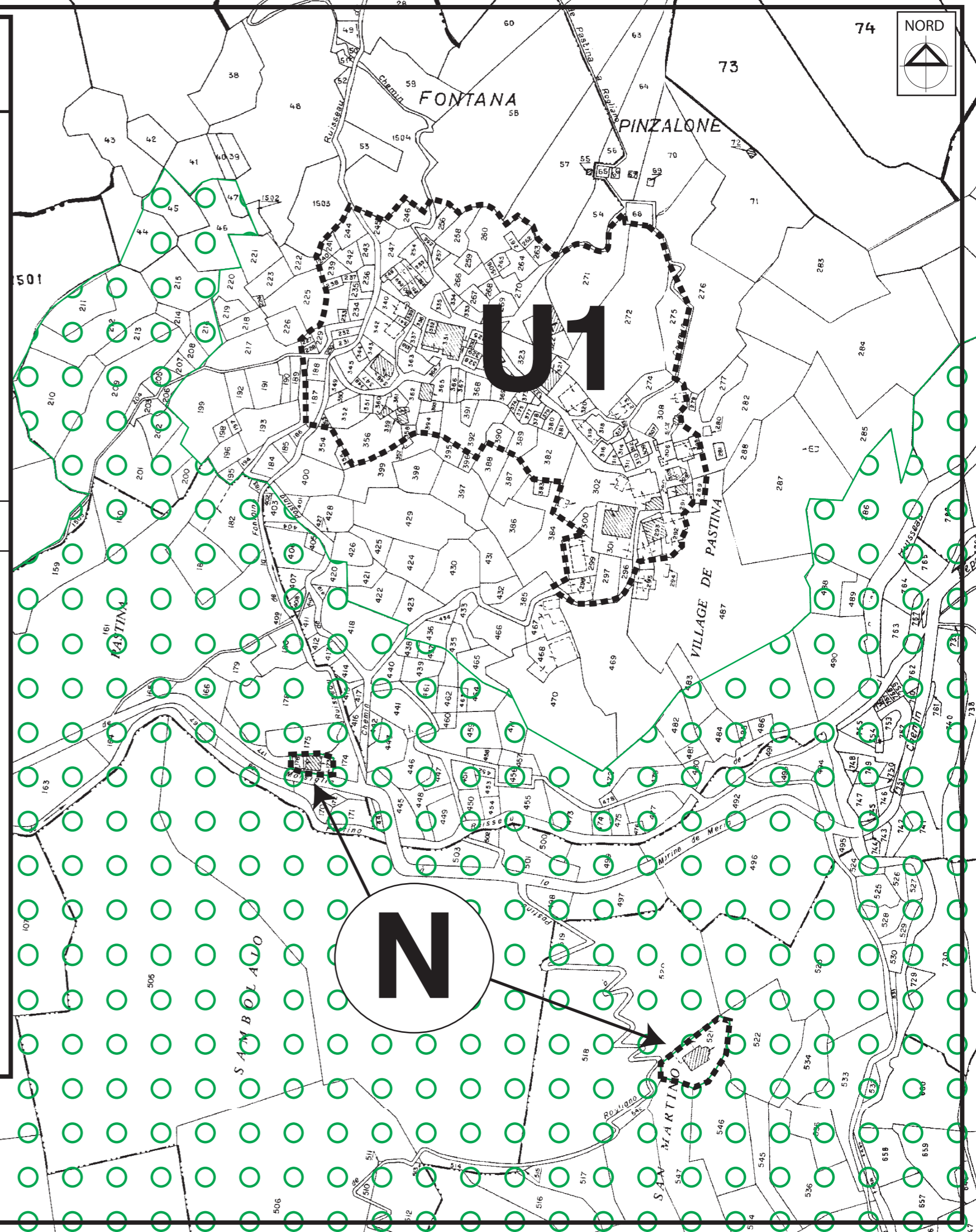
3.1. Secteur du village de Pastina

Date : Septembre 2011

Echelle : 
0 25 50
Meters

LEGENDE

-  LIMITE DE ZONE
-  EMPLACEMENT RESERVE
-  N° D'EMPLACEMENT RESERVE
LARGEUR D'EMPRISE
-  ESPACE BOISE CLASSE
(Article L.130.1 du code de l'urbanisme)
-  Périmètre des monuments historiques
inscrits et classés



EBC1